

ASD Discovery

We SHARE to inspire and ignite ideas for
Architecture & Sustainable Design (ASD) pillar!

The titles featured here are to give you a peek into the wealth of resources we have. We hope, through this will encourage you to explore and read further. Share with us topics of importance to ASD and we can introduce relevant titles from some [600,000 eBooks](#) we carry.

May 2016

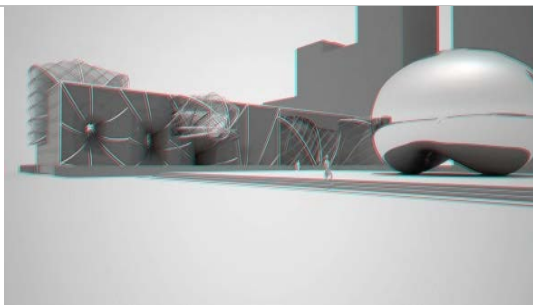
ACADEMIC ARTICLES



Aleatory architectures

This article covers new approaches combining granular materials research and structural engineering based on stochastic configuration of individual structural elements. These approaches, called aleatory architectures, imply building components have their own 'agency'. That means building components can adapt to structural or spatial contexts independently.

Source: [Granular Matter](#) (May 2016)



Towards experiential representation in architecture

Representation can communicate experiences before a building is even in existence. The first aim of this article is to define the inherent and unavoidable factors in the making and perception of all architectural representations. The second aim is to form representations that emphasize something that an architectural work will be able to produce.

Source: [Journal of Architecture and Urbanism](#) (January 2016)

ART & ARCHITECTURE



Design "Spineway" in San Antonio

"Spineway" is a public artwork done by a designer called Marc Fornes and it is in the City of San Antonio. It is digitally fabricated. Its structural network consists of catenary arches. The sculpture touches the ground on 12 concrete feet, upon a web-like grid of concrete inlay.

Source: [ArchDaily](#) (April 2016)



Casa Brutale is Getting Built, and Here's Why (Hint: The Internet)

Introducing Casa Brutale! It was established by Open Platform for Architecture in conjunction with Arup Associates. It is a house carved from the edge of a cliff. One of its main features is its rooftop pool surrounded by nothing but a dry desert. This is a visual illusion, providing the pop of blue in a sea of brown.

Source: [ArchDaily](#) (May 2016)

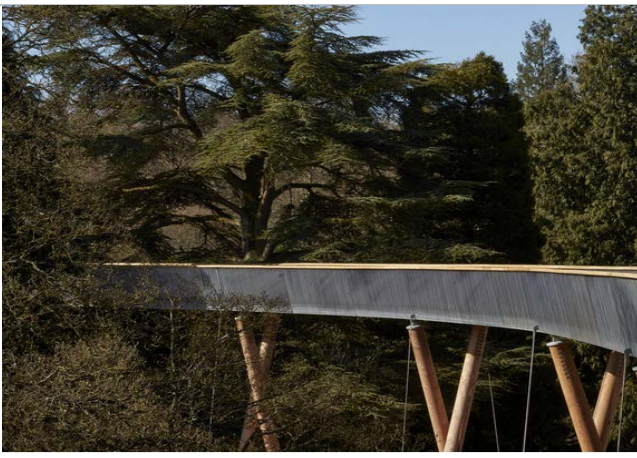
ENVIRONMENTAL ARCHITECTURE



EcoTouch PINK: 99% natural ingredients

EcoTouch PINK is a material designed to function as an insulator to heat and sound. It may be applied to walls and ceilings. It is also environmentally-friendly as it contains more than 99% natural ingredients and has the highest certified recycled content available in the fiberglass industry. It also does not contain formaldehyde.

Source: [ArchDaily](#) (2016)

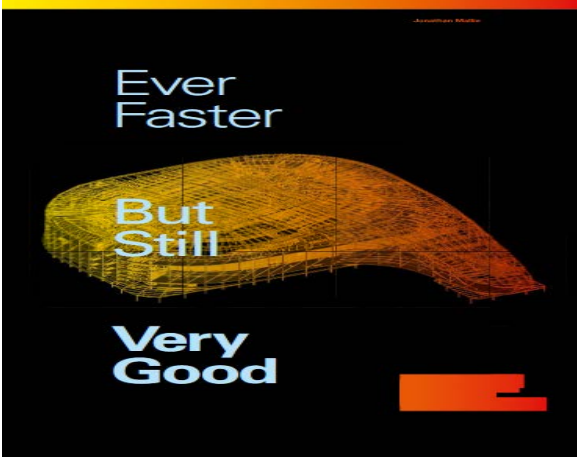


Glenn Howells takes to the tree tops

Introducing Treetop Walkway! This new walkway in the UK was designed by Glen Howells Architects. It was designed using advanced computational parametric principles and it uses materials that complement the surroundings. Its foundations are carefully located to prevent damage to existing trees.

Source: [World Architecture News](#) (April 2016)

PROFESSIONAL ARCHITECTURE



Ever Faster But Still Very Good

Jonathan Mallie is an expert who combines design innovation with technologically-advanced construction solutions. In this article, he explains how 4D and 5D building information modelling (BIM) technologies help architects build rapidly, while at the same time, the design-and-build process is not negatively affected.

Source: [Architectural Design](#) (January/February 2016)



Parametric Computation: History and Future

John Frazer is a pioneer and leader in generative design and evolutionary computation. In this article, he outlines the history of parametric architecture and discusses the new paradigm, Parametricism 2.0, Parametricism 2.0 will be used in scripting variational geometry, and it will function as a way to address wider social and environmental issues.

Source: [Architectural Design](#) (March/April 2016)



Your New Home: Ready to See Now, via Virtual Reality

Now you can view 3D visualizations of your proposed home design! Interior designers and furniture retailers are now using the latest technologies to give clients a better vision of how their designs and products fit in and match the spaces.

Source: [The New York Times](#) (May 2016)

For more inspiring articles or in-depth research, contact us at library@sutd.edu.sg!
An SUTD Library Service©2016